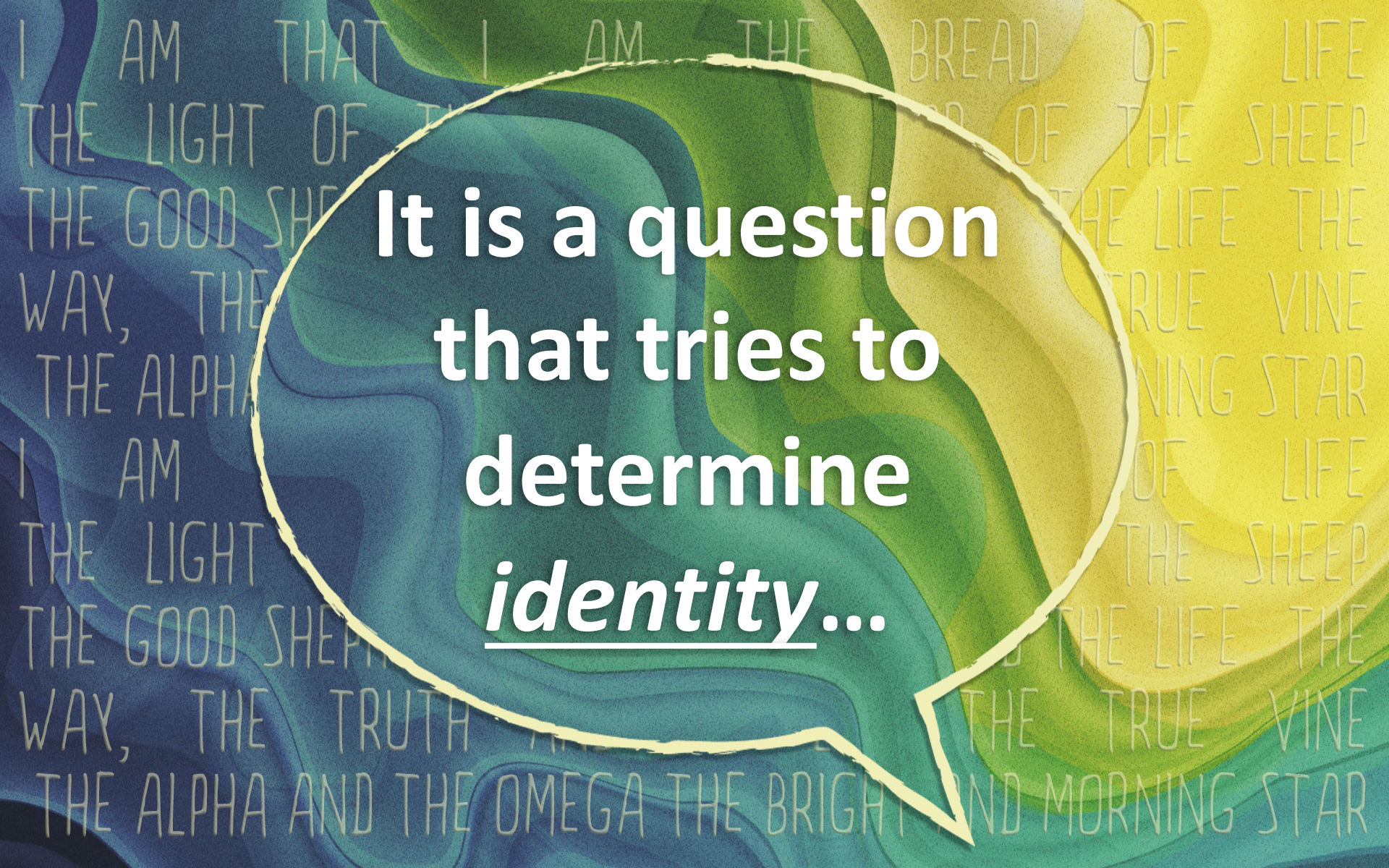
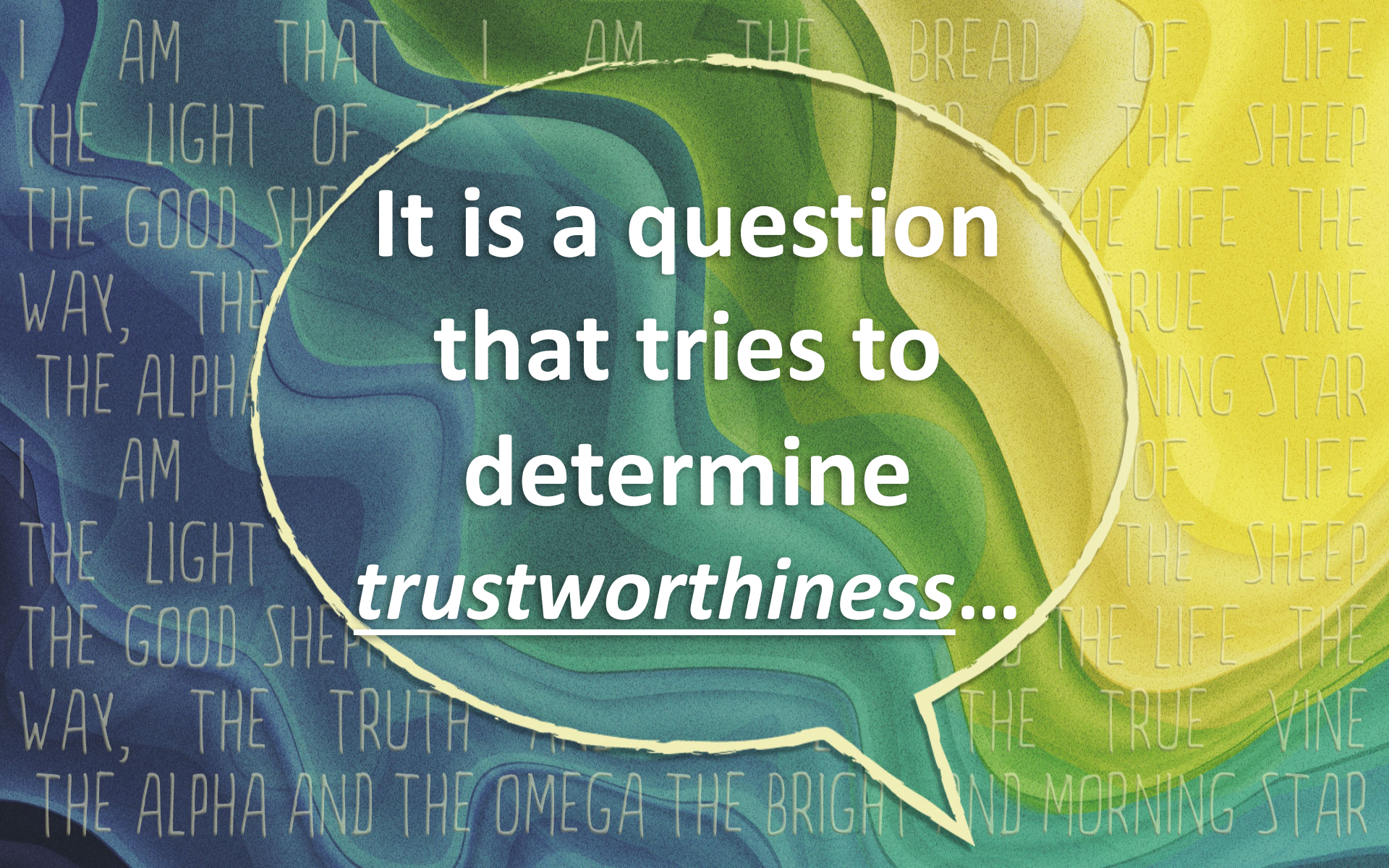


WHO ARE
YOU?



**It is a question
that tries to
determine
identity...**



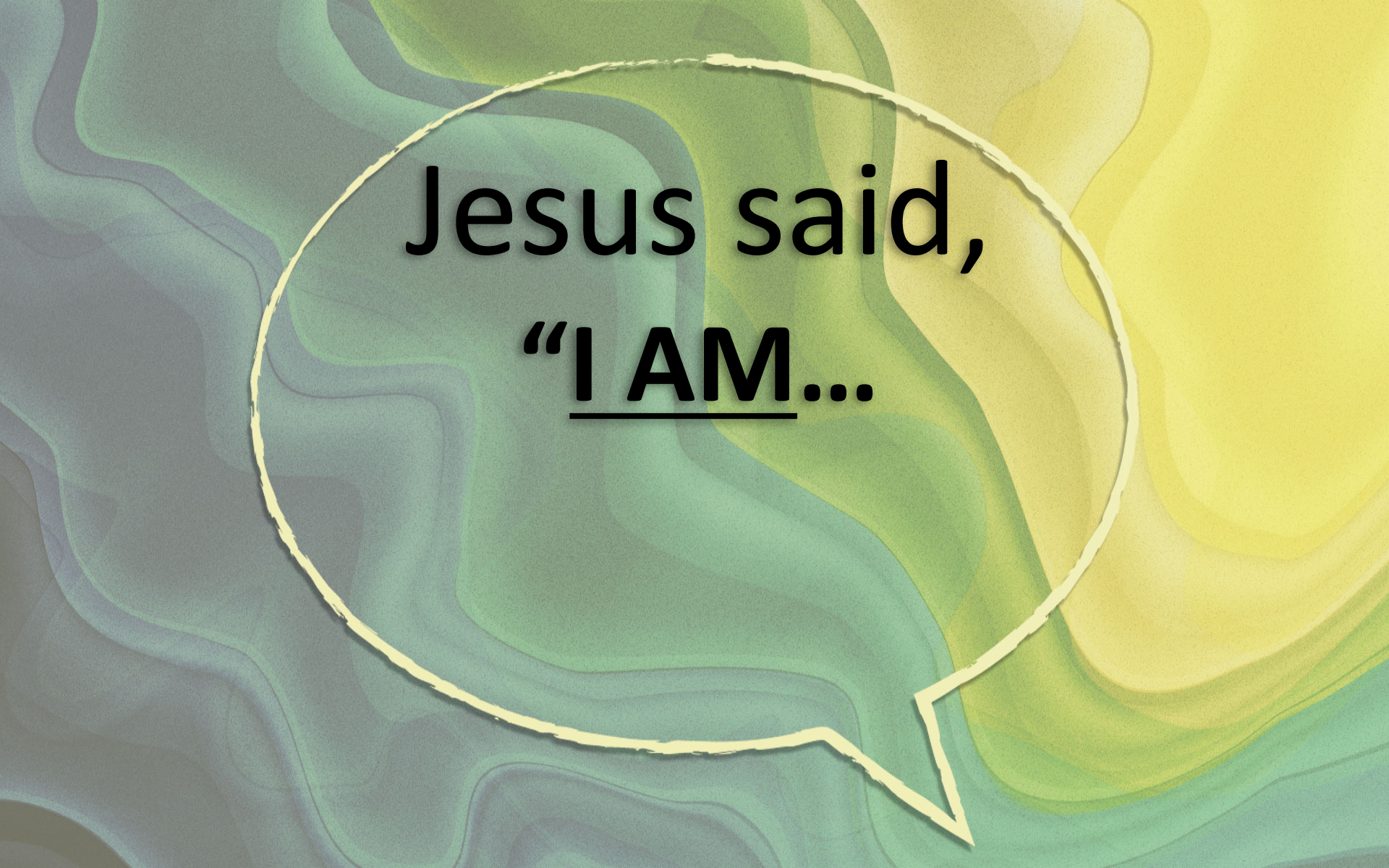
**It is a question
that tries to
determine
trustworthiness...**

**Who God is
determines the
essential ingredients
that defines our identity
because His presence
changes everything.**



“I AM THAT I AM”

Exodus 3:14



Jesus said,
“I AM...”



Jesus said,

“I AM...

***THE BREAD
OF LIFE”***

John 6:35



Jesus said,

“I AM...

***THE LIGHT OF
THE WORLD”***

John 8:12

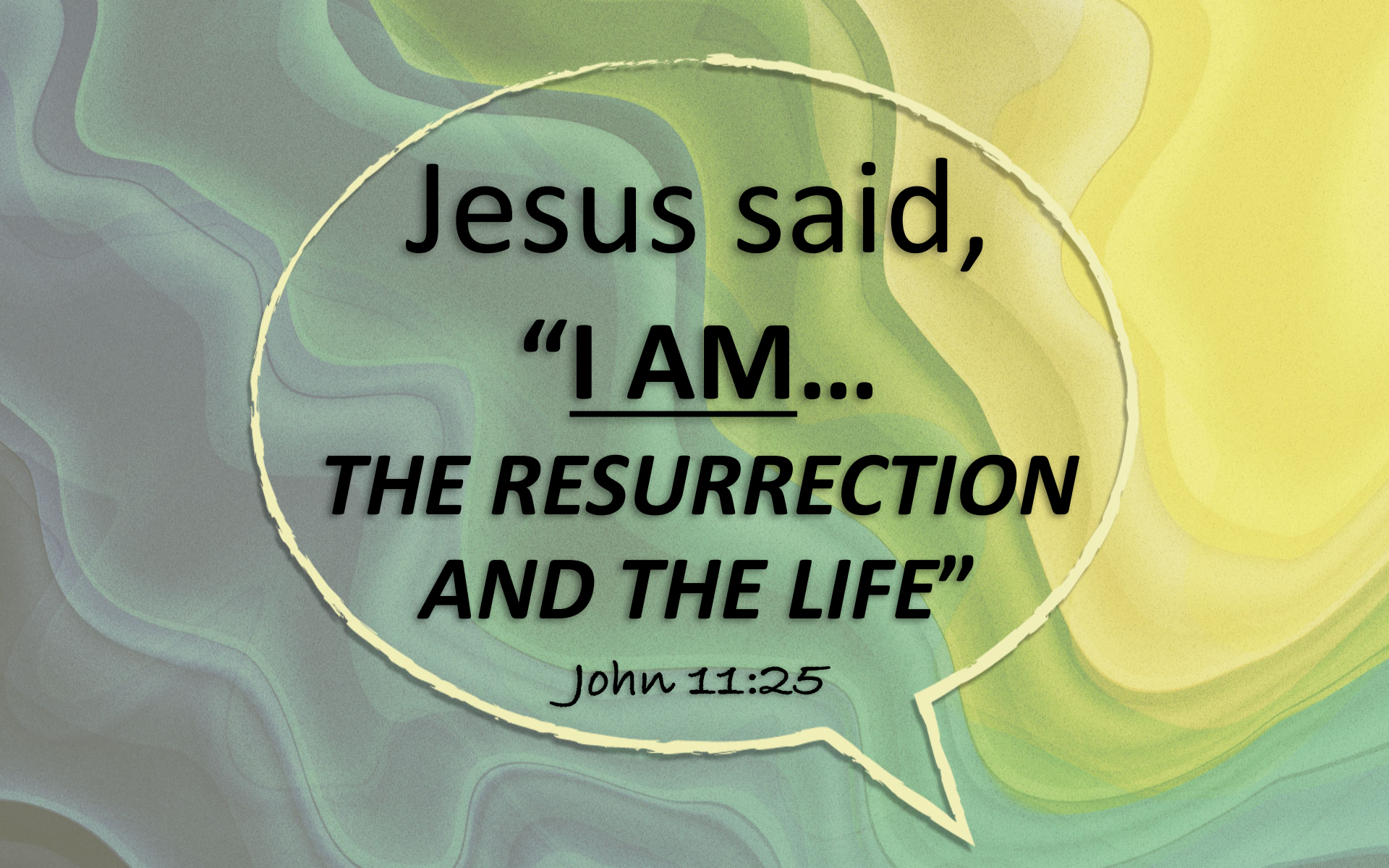


Jesus said,

“I AM...

***THE GOOD
SHEPHERD”***

John 10:11, 14



Jesus said,
“I AM...
***THE RESURRECTION
AND THE LIFE*”**

John 11:25

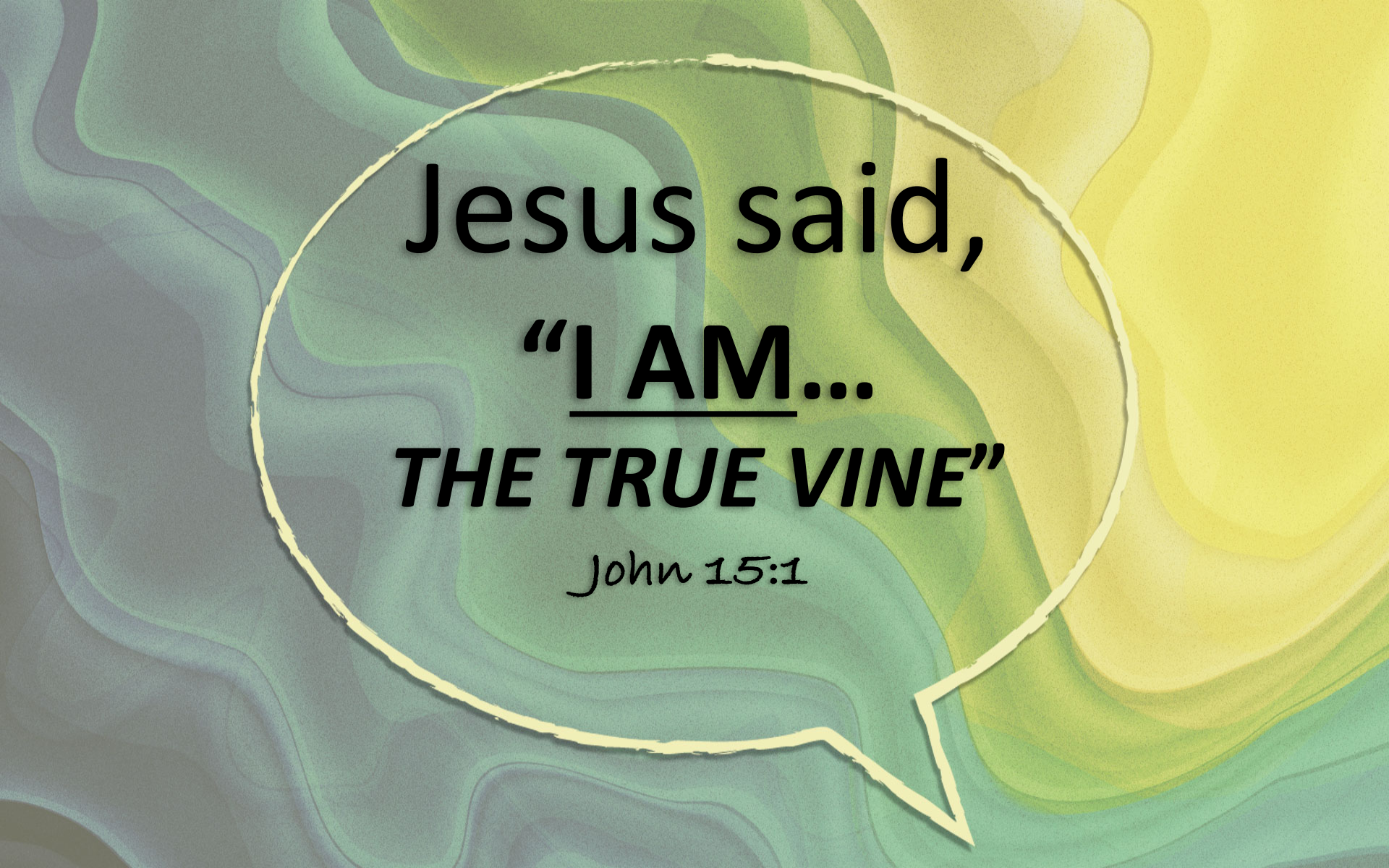


Jesus said,

“I AM...

***THE WAY AND
THE TRUTH AND
THE LIFE”***

John 14:6

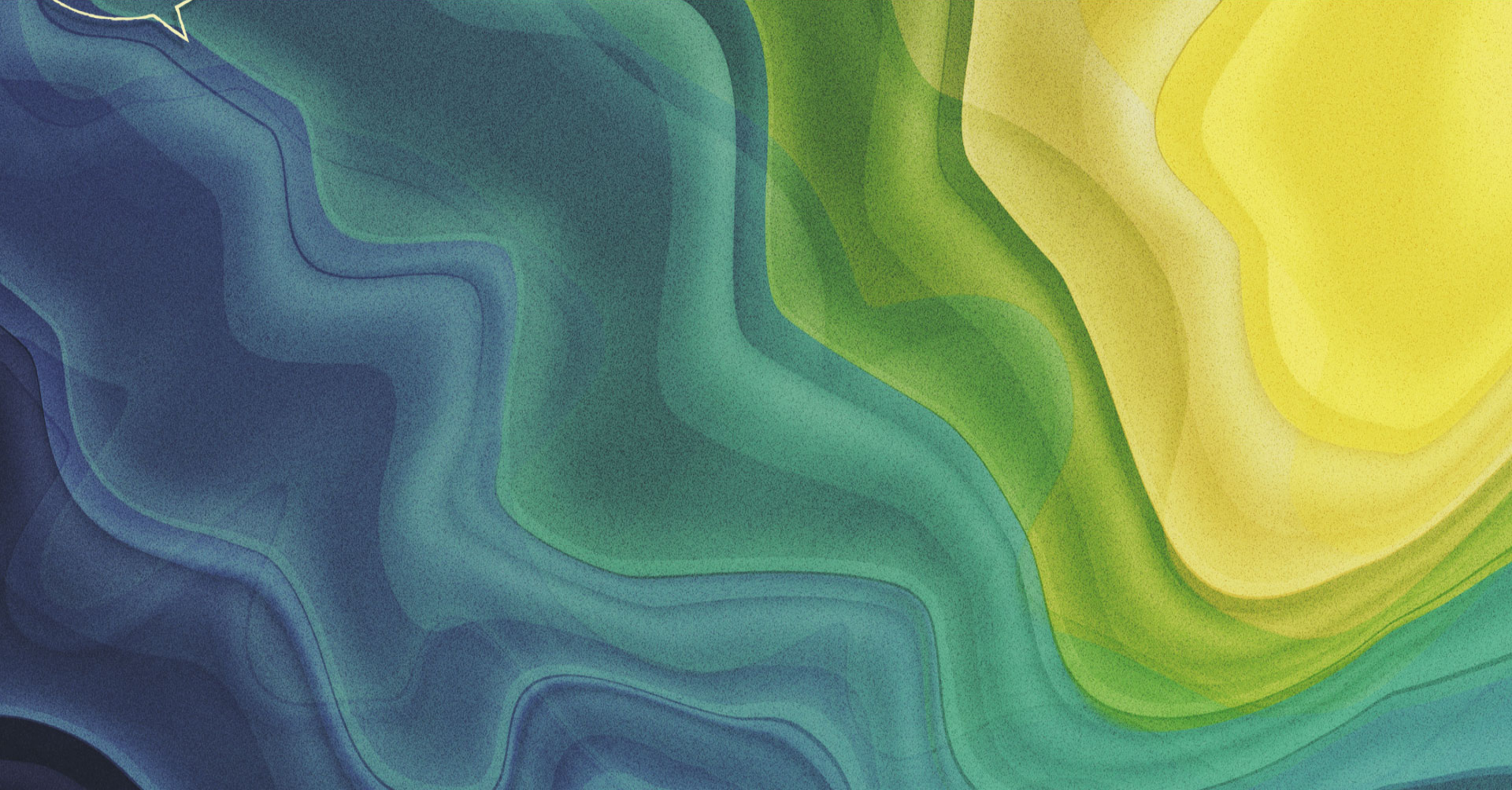


Jesus said,
“I AM...
THE TRUE VINE”

John 15:1

WHO ARE
YOU?

John 15:1-17



WHO ARE
YOU?

John 15:1-17

- God is about His business,
- and He wants to use us in that process,
- but it is only our obedience to Christ that will bring true and lasting joy, and instill a profound love He gives us for one another.

v.1-2

John 15:1-17

- 1 “I am the true vine,
and my Father is the vinedresser.
- 2 Every branch in me that does not bear fruit He
takes away,
and every branch that does bear fruit
He prunes, that it may bear more fruit.

v.1-2

John 15:1-17

- 1 “I am the true vine,
and my Father is the vinedresser.
- 2 Every branch in me that does not bear fruit He
takes away,
and every branch that does bear fruit
He prunes, that it may bear more fruit.

v.1-2

John 15:1-17

- 1 "I am the true vine,
and my Father is the vinedresser.
- 2 Every branch in me that does not bear fruit He
takes away,
and every branch that does bear fruit
He prunes, that it may bear more fruit.

v.3-5

John 15:1-17

3 Already you are clean because
of the word that I have spoken to you.

4 Abide in me, and I in you.

As the branch cannot bear fruit by itself,
unless it abides in the vine,
neither can you, unless you abide in me.

5 I am the vine, you are the branches.

Whoever abides in me and I in him,
he it is that bears much fruit,
for apart from me you can do nothing.

v.6-8

John 15:1-17

- 6 If anyone does not abide in me he is thrown away like a branch and withers; and the branches are gathered, thrown into the fire, and burned.
- 7 If you abide in me, and my words abide in you, ask whatever you wish, and it will be done for you.
- 8 By this my Father is glorified, that you bear much fruit and so prove to be my disciples.

v.9-11

John 15:1-17

- 9 As the Father has loved me,
so I have loved you.
Abide in my love.
- 10 If you keep my commandments,
you will abide in my love,
just as I have kept my Father's
commandments and abide in His love.
- 11 These thing I have spoken to you,
that my joy may be in you,
and that your joy may be full.

V.12-13

John 15:1-17

12 This is my commandment,
that you love one another
as I have loved you.

12 Greater love has no one than this,
that someone lay down his life for his friends.

v.14-15

John 15:1-17

14 You are my friends if you do what I command.

15 No longer do I call you servants, for the servant does not know what his master is doing; but I have called you friends, for all that I have heard from my Father I have made known to you.

v.16-17

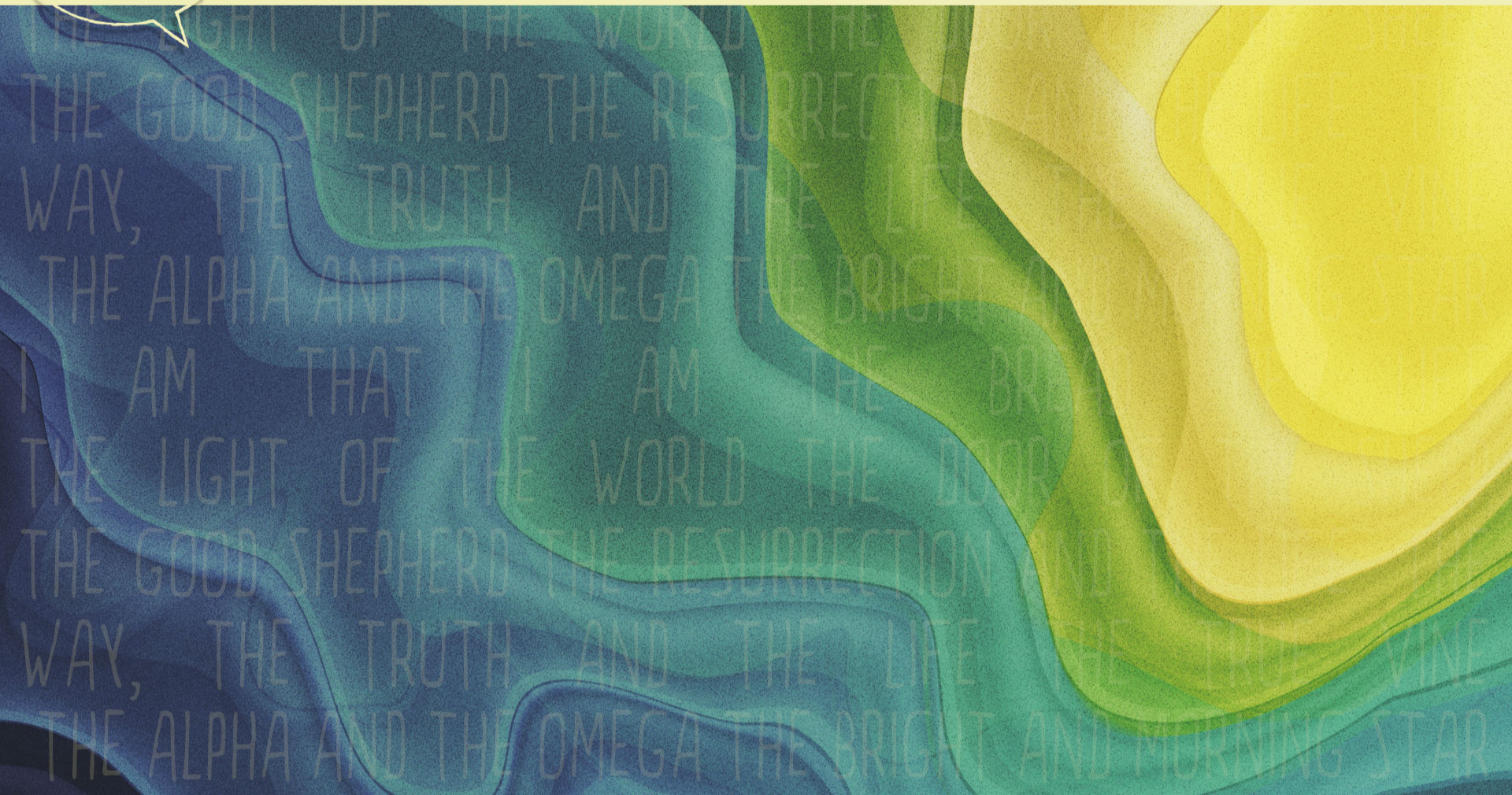
John 15:1-17

16 You did not choose me,
but I chose you and appointed you
that you should go and bear fruit
and that your fruit should abide,
so that whatever you ask the Father
in my name, He may give it to you.

17 These things I command you
so that you will love one another.

WHO ARE
YOU?

God will do His work:



WHO ARE
YOU?

God will do His work:

in spite of us,



WHO ARE
YOU?

God will do His work:

in spite of us,
or around us,

WHO ARE
YOU?

God will do His work:

in spite of us,
or around us,

or through us...

WHO ARE
YOU?

God will do His work:

in spite of us,
or around us,
or through us...

but in order for Him to work through us He first must first work

WHO ARE
YOU?

God will do His work:

in spite of us,
or around us,
or through us...

but in order for Him to work through us He first must first work

in us,

WHO ARE
YOU?

God will do His work:

in spite of us,
or around us,
or through us...

but in order for Him to work through us He first must first work

in us,

and the only way for Him to work in us is for us to

WHO ARE
YOU?

God will do His work:

in spite of us,
or around us,
or through us...

but in order for Him to work through us He first must first work

in us,

and the only way for Him to work in us is for us to

abide in Him,

WHO ARE
YOU?

God will do His work:

in spite of us,
or around us,
or through us...

but in order for Him to work through us He first must first work
in us,

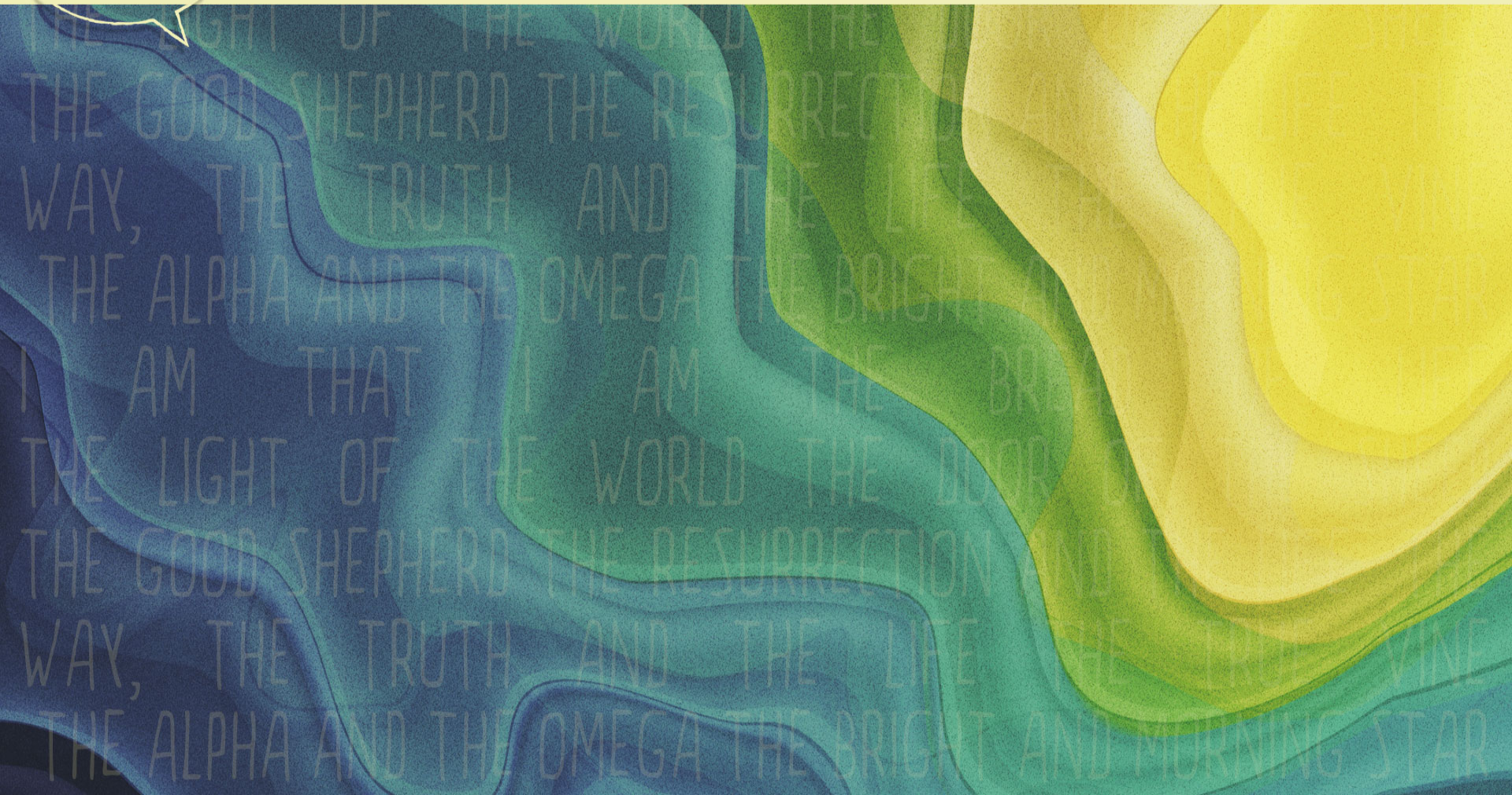
and the only way for Him to work in us is for us to

abide in Him,

like branches intimately connected to a vine.

WHO ARE
YOU?

The work God wants to do in us:



WHO ARE
YOU?

The work God wants to do in us:

**may be temporarily painful as He 'prunes'
off the things that are holding us back from
the life He designed us for;**

WHO ARE
YOU?

The work God wants to do in us:

may be temporarily painful as He 'prunes'
off the things that are holding us back from
the life He designed us for;

**but the more He prunes
the more fruit He will produce through us;**

WHO ARE
YOU?

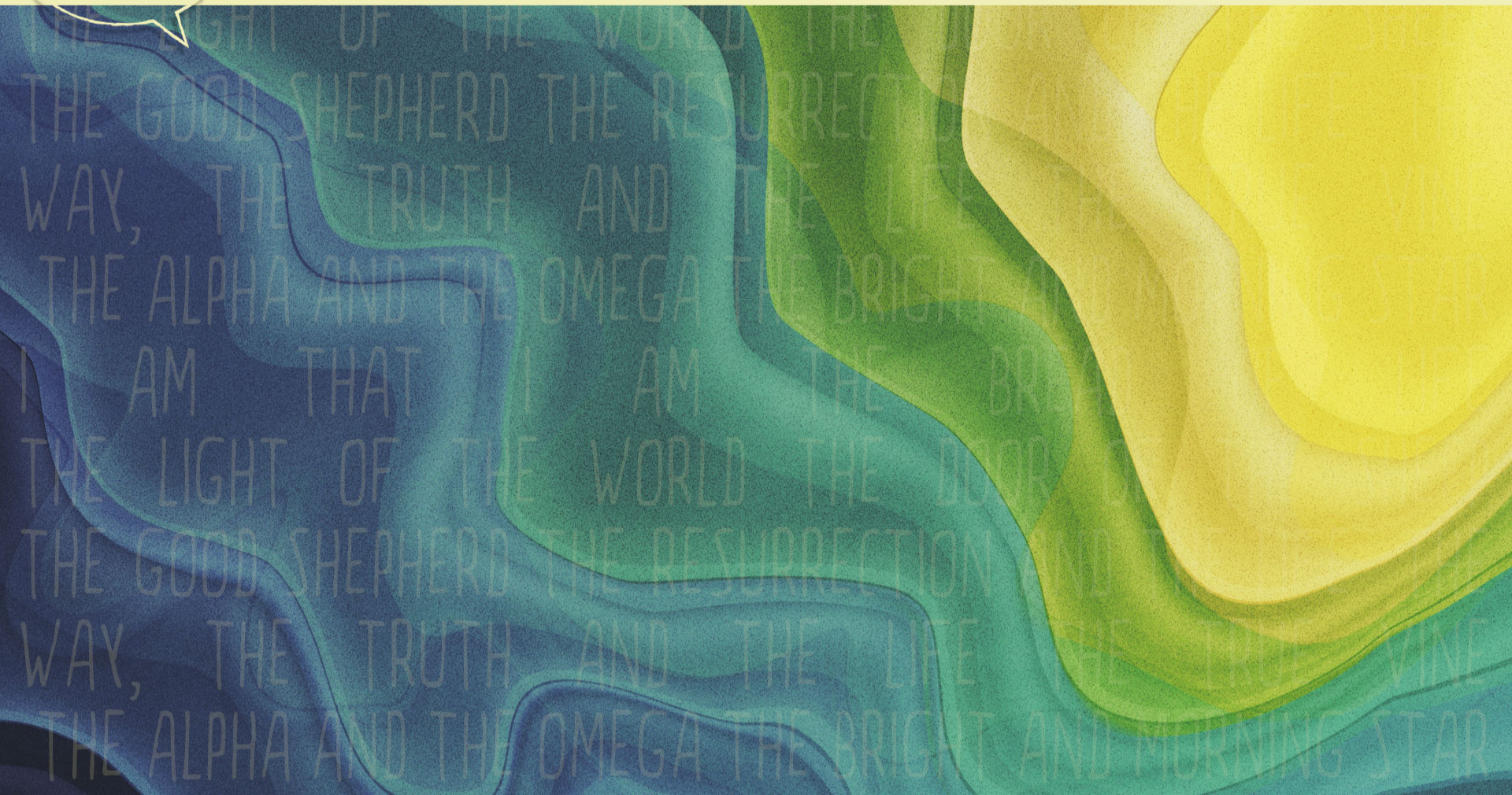
The work God wants to do in us:

may be temporarily painful as He 'prunes'
off the things that are holding us back from
the life He designed us for;
but the more He prunes
the more fruit He will produce through us;

**fruit that glorifies God,
demonstrates His love,
and reveals that we are His people.**

WHO ARE
YOU?

As followers of Christ:



WHO ARE
YOU?

As followers of Christ:

**...we recognize that we are totally dependent on
the love of God to be produced in us,
and on the joy of Christ to be radiated through us!**

WHO ARE
YOU?

As followers of Christ:

...we recognize that we are totally dependent on the love of God to be produced in us, and on the joy of Christ to be radiated through us!

...we recognize that to be obedient we have to entrust ourselves to His character and His sovereignty!

WHO ARE
YOU?

As followers of Christ:

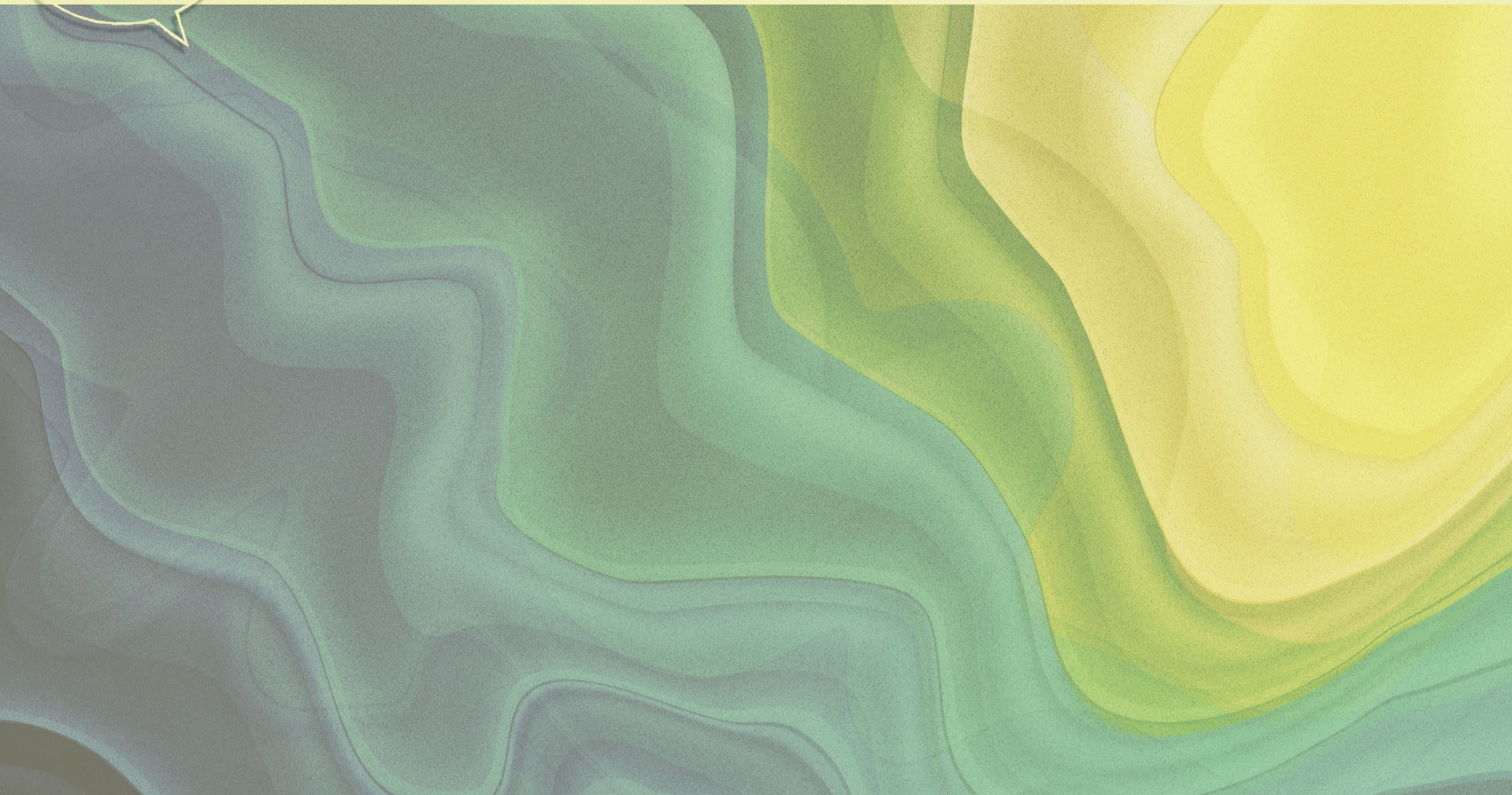
...we recognize that we are totally dependent on the love of God to be produced in us, and on the joy of Christ to be radiated through us!

...we recognize that to be obedient we have to entrust ourselves to His character and His sovereignty!

...we recognize that the Lord's highest calling is to love Him and others like He has loved us!

WHO ARE
YOU?

So...therefore...what now?



WHO ARE
YOU?

So...therefore...what now?

In what or with whom are you
'intimately connected' that is actually
inadequate for your soul?

WHO ARE
YOU?

So...therefore...what now?

In what or with whom are you
'intimately connected' that is actually
inadequate for your soul?

**Do you recognize the 'pruning' process
as an expression of God's love?**

WHO ARE
YOU?

So...therefore...what now?

In what or with whom are you
'intimately connected' that is actually
inadequate for your soul?

Do you recognize the 'pruning' process
as an expression of God's love?

**Where is God pruning right now,
and are you embracing it or fighting it?**

WHO ARE
YOU?

Big idea: Jesus is the True Vine

- God is about His business,
- and He wants to use us in that process,
- but it is only our obedience to Christ that will bring true and lasting joy, and instill a profound love He gives us for one another.



I AM THAT I AM THE BREAD OF LIFE

THE LIGHT OF THE OF THE SHEEP

THE GOOD SHEPHERD THE LIFE THE

WAY, THE TRUE VINE

THE ALPHA NING STAR

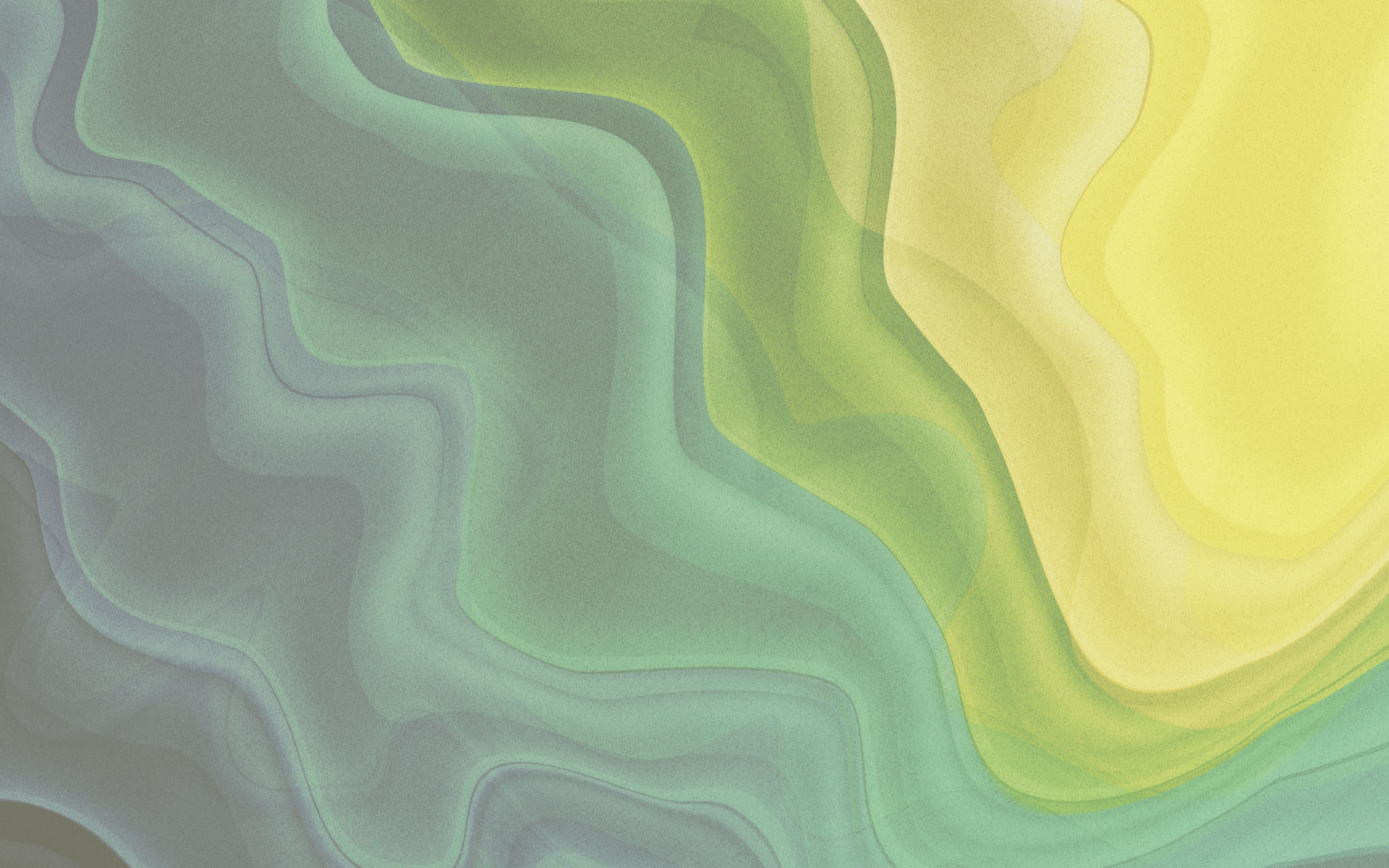
I AM OF LIFE

THE LIGHT THE SHEEP

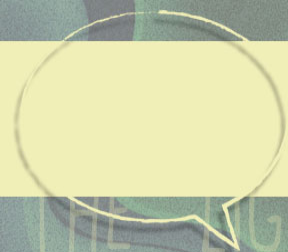
THE GOOD SHEPHERD THE LIFE THE

WAY, THE TRUTH THE TRUE VINE

THE ALPHA AND THE OMEGA THE BRIGHT AND MORNING STAR







THE LIGHT OF THE WORLD THE DOOR OF THE SHEEP
THE GOOD SHEPHERD THE RESURRECTION AND THE LIFE THE
WAY, THE TRUTH AND THE LIFE THE TRUE VINE
THE ALPHA AND THE OMEGA THE BRIGHT AND MORNING STAR
I AM THAT I AM THE BREAD OF LIFE
THE LIGHT OF THE WORLD THE DOOR OF THE SHEEP
THE GOOD SHEPHERD THE RESURRECTION AND THE LIFE THE
WAY, THE TRUTH AND THE LIFE THE TRUE VINE
THE ALPHA AND THE OMEGA THE BRIGHT AND MORNING STAR

WHO ARE
YOU?

THE LIGHT OF THE WORLD THE DOOR OF THE SHEEP
THE GOOD SHEPHERD THE RESURRECTION AND THE LIFE THE
WAY, THE TRUTH AND THE LIFE THE TRUE VINE
THE ALPHA AND THE OMEGA THE BRIGHT AND MORNING STAR
I AM THAT I AM THE BREAD OF LIFE
THE LIGHT OF THE WORLD THE DOOR OF THE SHEEP
THE GOOD SHEPHERD THE RESURRECTION AND THE LIFE THE
WAY, THE TRUTH AND THE LIFE THE TRUE VINE
THE ALPHA AND THE OMEGA THE BRIGHT AND MORNING STAR